



### Model ECM 20

3" - 14 gauge spun aluminum ball  
gold anodized.

Single sheave truck, cast aluminum  
stationary, non-fouling type ST-1-16

One set of halyard,  
#8 polypropylene

2 Nylon flag snaps

One 9" Cast Aluminum Cleat

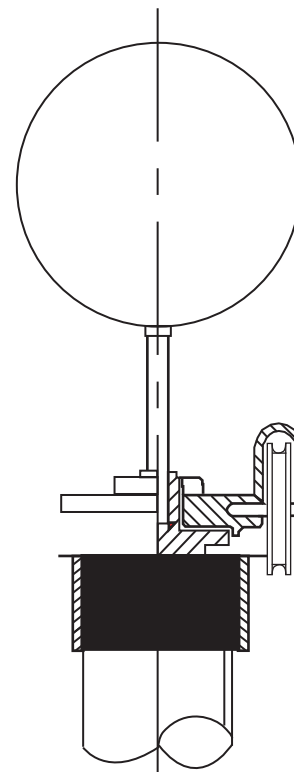
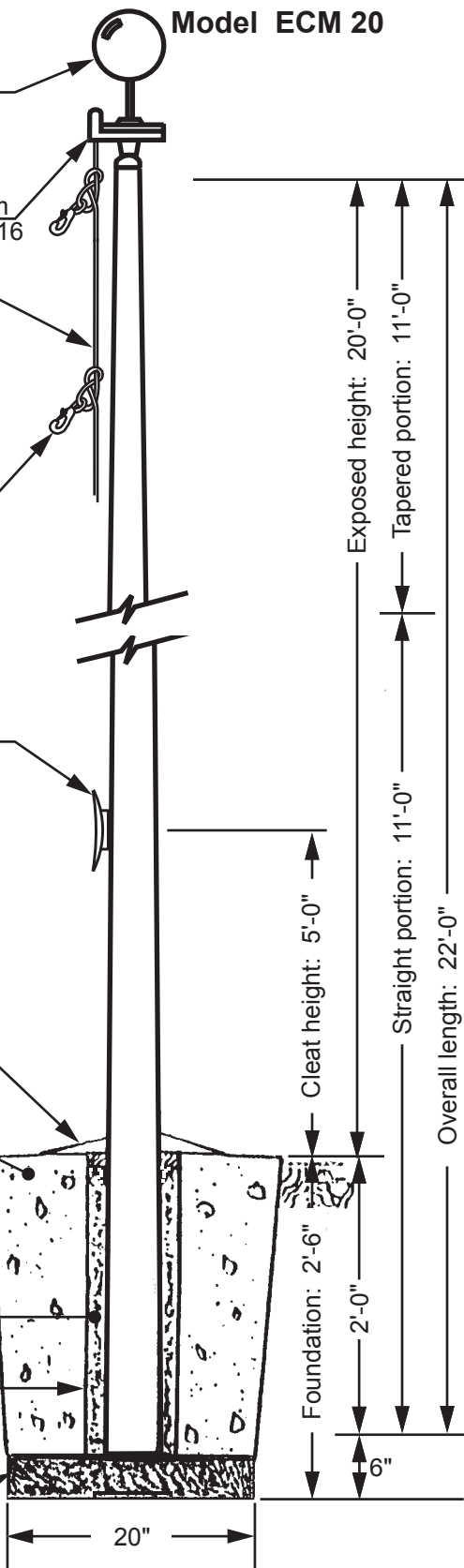
Aluminum flash collar (Optional)

3000 PSI concrete

Dry sand tightly tamped  
after aligning pole

Plastic PVC Sono tube 24"

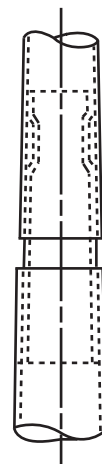
Crushed Stone



All shafts with overall length of more than 38'-6" are shipped in two sections.

Each section matched marked for field assembly. Exposed portion of jam sleeve must be **well lubricated** prior to assembly.

1-1/2" maximum shop gap allowed for field fitting (ram for tight joint)



Filename: ECM 20 stationary truck\_external halyard.ai

Project:	Ground set tapered aluminum flagpole: ALLOY: 6063T6	EDER FLAG	Date:
Location:	Exposed height: 20'-0"	Overall height: 22'-0"	MANUFACTURING COMPANY
Architect:	Ship in 1 section	Butt diameter: 2-3/8"	1000 W. Rawson Avenue
Contractor:	Top diameter: 1-7/8"	Wall thickness: .140"	Oak Creek, WI 53154
Customer:	Finish: 100 grit polish		Job: